

# SafeGuard Flex Seat Maintenance Guide

## 1) Preparation For Removal And Replacement Of Seat Back Covers And Retractor Assemblies

- a) Unlatch seat cushion and pivot cushion up and forward.
- b) Separate seat back outer cover lower edge from seat frame. Cover is attached to seat frame by “J” channel strip on bottom. Peel “J” channel from each flange on lower seat frame (Fig. 1).
- c) Lift open lower edge of retractor cover strip to expose attachment bolt.
- d) Insert ratchet wrench (5/8”) behind frame on nut securing retractor attachment bolt to remove bolt (Fig. 2 - 3).
- e) Repeat step d) for all three retractors.
- f) Insert wrench (5/8”) behind seat frame on nut securing center shoulder belt anchor attachment bolt and use ratchet wrench (11/16”) on bolt to remove bolt (Fig 4).
- g) Remove nuts (2) (11/16”) securing center module insert (SmartFrame) to seat frame (Fig. 5) and use wrench (11/16”) on retractor bolt



Fig 1



Fig 2



Fig 3



Fig 4

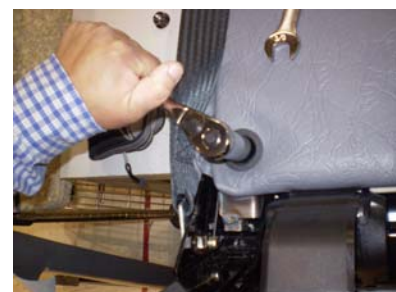


Fig 5  
1-877-447-2305

- h) Clip shoulder belt webbing to adjuster strap webbing to prevent webbing from being retracted (Fig. 6)
- i) Pull center module insert forward and away from the seat frame (Fig. 7 - 8)

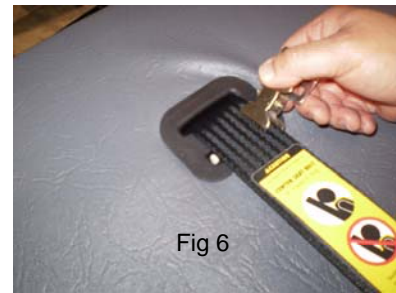


Fig 7



Fig 8



Fig 9

## 2) Replacement of outside restraint systems

- a) Remove bolt and nut securing webbing anchor to seat frame (Fig. 9)
- b) Remove screw (5/16") attaching webbing guide to center module insert frame (Fig. 10 – 11)



Fig 10



Fig 11



Fig 12

- c) Pull webbing guide rearward away from center module insert frame. (Fig. 12)
- d) Remove retractor assembly up and off of center module insert assembly. (Fig. 13)
- e) Assembly is reverse of disassembly.



Fig 13

### 3) Replacement of center restraint systems

- a) Remove bolt and nut securing webbing anchor to seat frame (Fig 4).
- b) Lift webbing from center restrain bezel. Remove screw (5/16") attaching webbing guide to center module insert frame (Fig. 14)
- c) Feed approximately 2" of webbing through upper slide of bezel (Fig. 15).
- d) Pry webbing retainer pin from lower pocket of bezel (Fig. 16), then remove pin from webbing loop (Fig. 17)
- e) Pull lower webbing loop through bezel (Fig. 18) and out to back side of center module (Fig.19).

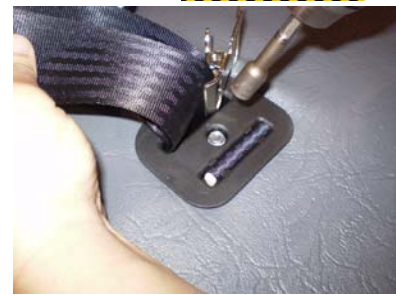


Fig 14



Fig 15



Fig 16



Fig 17



Fig 18



Fig 19

- f) Pull Bezel forward and away from center module (Fig. 20) and then insert bezel through opening in center module (Fig. 21) so that bezel clears over upper reinforcement bar on back side of module (Fig. 22).
- g) Remove restraint assembly from center module.
- h) Assembly is reverse of disassembly.



Fig 20



Fig 21



Fig 22

#### 4) Seat Back Outer Cover Replacement

- a) If necessary, pry open tabs on upper back panel securing cover to seat. (Fig. 23).

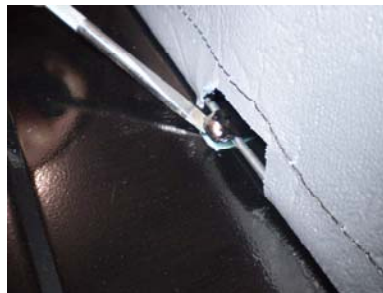


Fig 23

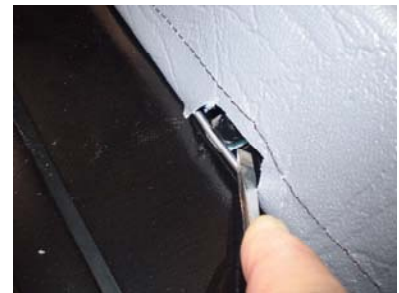


Fig 24

- b) To release top vinyl covering from seat back frame, pry side wires from out of panel hooks (Fig. 24).

- c) To release side vinyl covering from seat back frame, pry side wires from out of panel hooks (Fig 25-28)



Fig 25

- d) Assembly is reverse of disassembly. Locate cover at upper corners first and then attach cover upper wire to upper seat frame hooks. Attach sides using wire hooks.

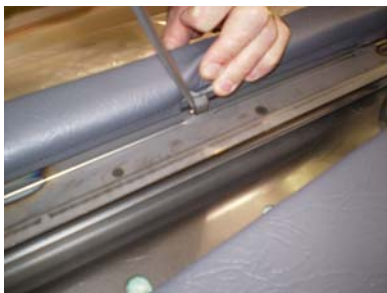


Fig 26



Fig 27



Fig 28

## 5) Center Module Insert (SmartFrame) Cover Replacement

- a) Remove outside restraint systems webbing guides from center module insert assembly (Section 2.b,c)
- b) Remove center restraint system assembly from center module insert assembly (Section 3)
- c) Center module insert cover is attached to insert frame by “J” channels on top and bottom and both sides. Peel “J” channel from each flange on module insert frame. (Fig. 29 - 30)
- d) Assembly is reverse of disassembly.



Fig 29



Fig 30

# SafeGuard Flex Seat Maintenance Menu

➤ **Seat Cushion Tilting**

1. On the bottom side of the seat cushion, rotate center turnbuckle to position that unlatches seat from frame flange.
2. Pull up on the cushion from the retractor side.

➤ **Seat Cushion Removal**

1. On the bottom side of the seat cushion, rotate center turnbuckle to position that unlatches seat from frame flange.
2. Tilt the cushion to a vertical position.
3. On the bottom side of the cushion unscrew, with a Philips screwdriver two hinges that attach to the cushion and wrap around the seat frame.
4. Pull up on the cushion to remove from seat frame.

➤ **Seat Cushion Cover and Foam Removal**

1. Follow the procedures for “Seat Cushion Removal”
2. On the bottom side of the seat cushion, remove all staples securing the seat cushion cover vinyl to the board.
3. Remove Seat Cushion Cover along with foam.

➤ **SmartFrame™ Tilting**

1. Follow the procedure for “Seat Cushion Removal”
2. Remove two (2) nuts, with 11/16<sup>th</sup> socket, on each side securing center module insert to seat frame.
3. Pull center module insert forward and away from the seat frame.

➤ **SmartFrame™ Removal**

1. Follow the procedure for “SmartFrame™ Tilting”
2. Separate J-channel attachment of the seat back outer cover from lower seat frame.
3. Insert a wrench (5/8<sup>th</sup> in.) behind the frame on a nut securing center single buckle and use ratchet wrench (11/16<sup>th</sup> in) on buckle bolt to remove bolt.
4. Clip shoulder belt webbing to adjust strap webbing to prevent it from being retracted.
5. Remove the self-tapping hex head screw attaching webbing guide to center module insert frame.

➤ **Access Lap And Shoulder Belt For Removal**

❖ *OutBoard Lap and Shoulder Belts*

1. Follow the procedure “SmartFrame™ Tilting”
2. Remove bolt with 5/8<sup>th</sup> in. ratchet and nut with 11/16<sup>th</sup> in. wrench securing outer webbing anchor to seat frame outer sides.
3. Separate J-channel attachment of the seat back outer cover from lower seat frame.
4. Lift open lower edge of retractor cover strip to expose attachment bolt.
5. Insert wrench (5/8<sup>th</sup> in.) behind the frame on a nut (3/4<sup>th</sup> in) securing retractor attachment bolt and use ratchet wrench on retractor bolt to remove bolt.

❖ *Center Lap and Shoulder Belts*

6. Repeat steps 1, through 5 for the center retractor and lower anchor.
7. Remove the center webbing guide by unscrewing center self tapping hex head screw located behind the web.
8. Remove two (2) self-tapping hex head screws attaching the webbing guide to the outer module insert frame.

➤ **Access Covers And Foams For Removal**

❖ *Outer Cover and Foam*

1. Follow the procedures “Seat Cushion Removal”
2. Follow the procedure “SmartFrame™ Removal”
3. To release vinyl covering from seat back frame, pry side and top wires from out of panel hooks.

❖ *Inner Cover and Foam*

1. Follow the procedures “Seat Cushion Removal”
2. Follow the procedure “SmartFrame™ Removal”
3. The center module insert cover is attached to insert frame by J-channel on top, bottom and both sides. Peel J channel from each flange on module insert frame.

➤ **Buckles Removal**

1. Follow the procedure “Seat Cushion Tilting”
2. Separate J-channel attachment of the seat back outer cover from lower seat frame.
3. Insert wrench behind frame on the nut securing single buckle attachment bolt and use ratchet wrench on single buckle bolt to remove bolt.
4. Lift open lower edge of the middle retractor cover strip to expose attachment bolt.
5. Insert wrench behind frame on a nut securing retractor attachment bolt and use ratchet wrench on retractor bolt to remove bolt.
6. With two 3/4” wrenches unscrew two bolts located on the both sides on the dual buckle.
7. Slide dual buckle from the rod.