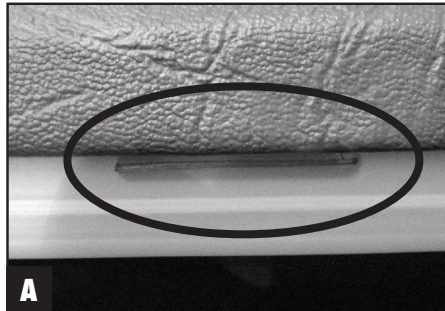


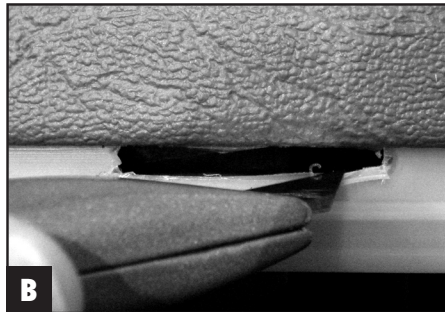
⚠ WARNING

FAILURE TO FOLLOW THESE INSTRUCTIONS CAN RESULT IN SERIOUS INJURY OR DEATH. PLEASE READ AND FOLLOW ALL INSTRUCTIONS CAREFULLY.

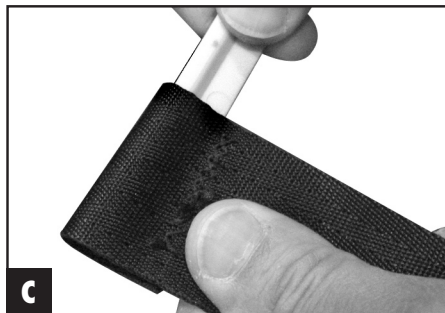
1. Follow the procedures for "Seat Cushion Removal" and for "SmartFrame Tilting."
2. Mark the location of the mounting hole for the strap tongue on the plastic J-channel. **A**



3. Using a utility knife cut a 1.75" x .25" opening in the J-channel. Use the opening in the L-channel as a template. **B**



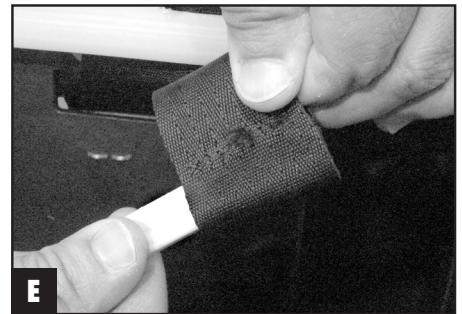
4. Remove the web bar from the strap tongue. **C**



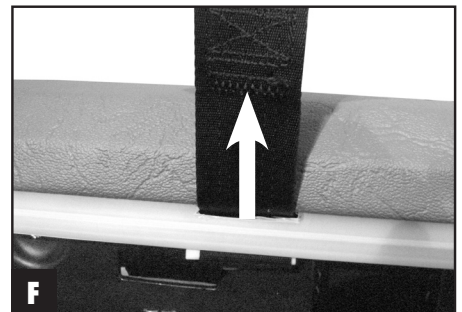
5. Feed the strap tongue down through the mounting hole. Pull the strap tongue through the hole as far as possible. A screwdriver may help pull the strap tongue through the mounting hole. **D**



6. Insert the web bar into the strap tongue. **E**



7. Pull the strap tongue so the web bar is seated against the metal L-channel. Give the strap tongue a firm pull to check that the web bar is fully seated. **F**



8. Lay the Strap Tongue across the top of the SmartFrame as shown. **G**



9. Firmly push the SmartFrame back into the outer seat back until flush. Complete SmartFrame attachment and seat cushion attachment per procedures.

safeguardseat.com

Westfield, IN 46074-0408

Made in U.S.A.

SafeGuard Customer Service: 1.877.447.2305